

key facts 2024

Our mission: make life better for children

For more than 110 years, our mission has been to make life better for children. Since our humble beginnings in 1913 as a “baby camp,” our commitment to our community has included not only high-quality patient care but also advocacy, education and preventive care with an unwavering focus on our mission.

Children’s HealthSM is the leading pediatric health care system in North Texas and one of the largest pediatric health care providers in the nation. A private, not-for-profit organization, Children’s Health includes two full-service hospitals and an extensive network offering specialty, urgent, primary and virtual care to the children of North Texas and beyond. In addition, Children’s Health is affiliated with UT Southwestern, one of the nation’s premier academic medical centers.

Top awards and achievements



Ranked in all pediatric specialties for seven consecutive years.* Specialties include Orthopedics, Gastroenterology and GI Surgery, Cardiology and Heart Surgery, Urology, Neurology and Neurosurgery, Diabetes and Endocrinology, Nephrology, Neonatology, Cancer, Pulmonology, and new in 2024, Behavioral Health



Highest honor for nursing excellence since 2009

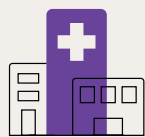
Recognized as a top place to work:



*Children’s Medical Center Dallas

Our system: facilities and specialties

- **Children’s Medical Center Dallas:** An academic medical center campus with a 488-licensed bed, full-service hospital, including the only pediatric Level I trauma center in North Texas, with construction underway on a new, transformative \$5 billion campus to replace the existing campus in six to seven years
- **Children’s Medical Center Plano:** A 212-licensed bed, full-service hospital with a new patient tower, an expanded Emergency Department, newly designated as a Level III trauma center and two specialty centers, including the Children’s Health Andrews Institute for Orthopaedics & Sports Medicine



Locations offering specialty care:

60



Pediatric specialty and subspecialty programs:

50+

- **Behavioral health:** Robust outpatient services, plus a sizable investment in up to 100 inpatient pediatric beds at the future Texas Behavioral Health Center at UT Southwestern
- **Transplant:** The busiest pediatric heart transplant center in the nation and the busiest pediatric kidney transplant program in North Texas
- **Cancer and blood disorders:** The only National Cancer Institute (NCI)-designated cancer center in North Texas

By the numbers*



Patient visits

1,037,034

556,806

Outpatient visits



337,253

Unique patients



153,510

Emergency room visits



700

Total licensed beds



Medical and dental staff

1,895

(includes physicians and advanced practice providers)

253,725

Ancillary visits



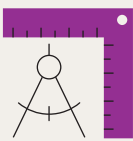
10,643

Team members



Community benefit

\$305.8 million



5.8 million

Square feet



Charity care

\$111.5 million

Retail value of charity care pending final audit

*Numbers as of Dec. 31, 2024

Our network

Children's Health Care Network: A trusted, extensive community comprised of more than 680 clinicians providing care at 180 pediatric primary care, specialty and therapeutic facilities, serving more children than ever before across North Texas.



Virtual visit programs

35



School-based Telehealth sites

257



TCHATT school sites*

878



Remote patient monitoring sites

15

*Texas Child Health Access Through Telemedicine (TCHATT) is in collaboration with UT Southwestern and is funded and administered by Texas Child Mental Health Care Consortium (TCMHCC)

Continuing our excellence, preparing for tomorrow

In 2024, Children's Health and UT Southwestern broke ground on a new, transformative \$5 billion campus to replace the existing Children's Medical Center Dallas. The new campus will be one of the largest pediatric hospitals in the nation and will be a hub of research, education and innovation. It will include more than 4.7 million square feet of construction, three new towers and 552 beds.

Learn more: childrens.com/watchusgrow

children'shealth[®]

UT Southwestern
Medical Center[™]

