

new Dallas campus



Note: This conceptual rendering shows the proposed design of the new Dallas pediatric campus.

our mission: make life better for children.

For more than 110 years, it has been our mission to make life better for children. Fulfilling our mission has never been as important as it is today as the North Texas pediatric population is expected to double by 2050. Children's HealthSM and UT Southwestern, who began collaborating more than 60 years ago, are building a new pediatric campus to ensure we meet this demand. This new Dallas campus, will be a destination for leading-edge patient care and emerging treatments and will provide the infrastructure needed to transform health care for the most complex pediatric patients. It will also serve as a hub for innovations, academic research and the development of lifesaving technologies to provide exemplary care for children for decades to come.

Visit childrens.com/watchusgrow to learn more.



UT Southwestern
Medical CenterTM

our growing community.



The pediatric population in the Dallas-Fort Worth region is almost **2.5 million**, expected to grow by **more than 20%** by 2032, surpassing **3 million** children, and double in size by 2050.¹



25% of the population of Texas is age 17 or younger, meaning more than 1 out of every 4 people living in our state is a child.²

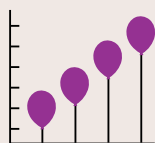
It is estimated by 2028, the DFW Metroplex will be home to **8.5 million** people, **up 600,000** from 2020.³



More than 17% or nearly **13.5 million** children in Texas have special health care needs due to conditions such as cancer, asthma, sickle cell and depression.⁴



Collin County's population has **grown 37.2%** since 2010 and is expected to double by 2060.

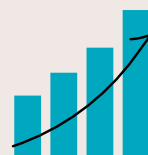


Frisco's population has grown by **71.4%** and McKinney's is **49% higher** than 10 years ago.⁵



Towns like Celina and Midlothian are **growing exponentially** and adding thousands of new homes to catch up to the massive demand for housing across the sprawling Metroplex.

From 2010 to 2020, Dallas County cities have seen significant growth, particularly Irving, Grand Prairie and Richardson with **18.7%**, **11.8%** and **20.4%** growth, respectively.



SOURCES

1. CLARITAS POP-FACTS® 2022 & ESRI, 2020.
2. UNITED STATES CENSUS. AMERICAN COMMUNITY SURVEY (ACS) 5-YEAR ESTIMATES.
3. CLARITAS POP-FACTS® 2023.
4. AMERICAN ACADEMY OF PEDIATRICS.
5. 2020 US CENSUS.

UPDATED: JANUARY 2024

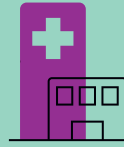
expanding to help more kids in more places.

Current Hospital

vs.

New Hospital

1.89
million square feet



Approximately
2
million square feet

4,198
parking spaces



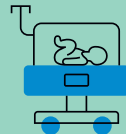
6,000+
parking spaces

400 beds



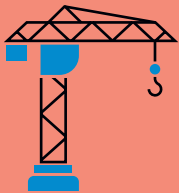
552 beds
with space for future expansion

47-bed
Level IV Neonatal Intensive
Care Unit (NICU)



96-bed
Level IV Neonatal Intensive
Care Unit (NICU)

get to know our new pediatric campus.



4.7 million square feet of constructed space, including two parking garages, a thermal plant and more.

122

pre-/post-operative rooms



27

imaging modalities

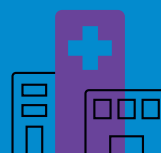


A new outpatient clinic building next to the hospital will

add 96
exam rooms to the existing 344 (440 total)
that will continue to operate at the existing Children's Health Specialty Center Dallas outpatient facility.



Two-story surgical suite with
20 operating rooms



Three towers, including
two 12-story towers
and **one eight-story tower**

advanced treatments, highly specialized care.



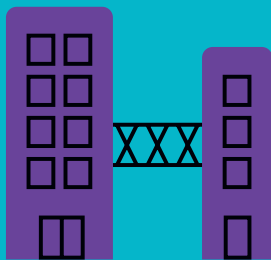
Space dedicated to coordinating research studies to ensure more patients can benefit from **breakthrough developments**



The only Level I pediatric trauma center in the region, with 90 Emergency Room pods and 24 observation rooms, **increasing Emergency Department capacity by 15%**



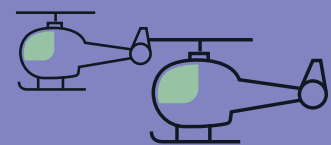
A new fetal care center to provide **the region's most advanced and accessible services** for complex maternal and fetal health care, **including fetal surgery** capabilities at the adjoining Clements University Hospital



A connector bridge between the new campus and William P. Clements Jr. University Hospital to ensure babies at Clements University Hospital have **immediate access to care** in the Children's Health Level IV NICU and Cardiovascular Intensive Care Unit (CVICU)



Largest Level IV NICU
in Dallas



Two helicopter pads
to reduce the transfer time of patients

incredible facts. incredible new space.

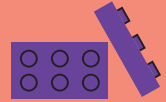


1,800
people

If everyone stood hand in hand, it would take 1,800 people to create a ring around the new pediatric campus construction site.



The hospital, set to be 240 feet tall, is **taller than the Statue of Liberty**, which is 151 feet tall.



It would take more than **1 billion** blocks to build the hospital out of Lego® blocks.

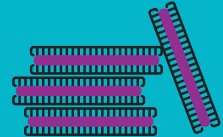


The new hospital is built on the site of **Mickey Mantle's** old bowling alley and restaurant.



6.9M
pieces

It would take 6,900,000 pieces of paper to **reach the top** of the hospital building.



The hospital is as tall as

2,880
stacked Oreo cookies.

The hospital will require approximately 800,000 cubic yards of excavation, which is equal to



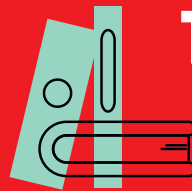
245
Olympic-size swimming pools.



16,820
mid-size cars

The new pediatric campus will need approximately 37,000 tons of rebar, which is roughly **equal to 16,820 mid-size cars.**

Each lap around the new pediatric campus is **1 mile.**

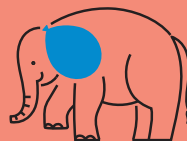


1,680 books

If you stacked all the Harry Potter books, it would take 1,680 books to equal the height of the hospital.



The new pediatric campus, set to be **4.5 million square feet**, will be larger than AT&T Stadium, home of the Dallas Cowboys, which is 3 million square feet.



The inpatient tower, set to be **240 feet tall**, is as tall as a tower of **24 elephants.**

The hospital will require approximately **376,000 cubic yards** of concrete, which roughly equals the weight of

3,390

Statues of Liberty.



The new pediatric campus, set to be 800 feet long, is equal to nearly **six Boeing 737 planes** lined up end to end.

