

2024 key metrics

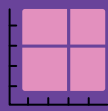
Unique patients

337,253



Square feet

5.8 million



Locations offering specialty care

60



School-based Telehealth sites

257



TCHAT school sites*

878

*Texas Child Health Access Through Telemedicine (TCHAT) is in collaboration with UT Southwestern and is funded and administered by Texas Child Mental Health Care Consortium (TCMHCC)

Pediatric specialty and subspecialty programs

50+



Medical and dental staff

1,895

(includes physicians and advanced practice providers)



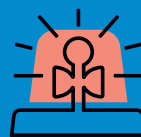
11

Facility dogs



Total licensed beds

700



Total emergency room visits

153,510

Dallas

97,720

Plano

55,790



Total patient visits

1,037,034

Dallas

565,433

Plano

214,577



66

Solid organ transplants



33

Heart transplants



Team members

10,643



Cardiac surgical procedures

642

112 years



Number of years dedicated to making life better for the children of North Texas and beyond



Ancillary visits

253,725



\$305.8 million

Community benefit



\$5.8 billion

Gross revenue



\$111.5 million

Charity care*
*Retail value of charity care pending final audit

*Data reflects total from 2024, ending Dec. 31, 2024, unless otherwise noted.