

# 2025 key facts



## our mission: to make life better for children

Children's Health<sup>SM</sup> is the leading pediatric health care system in North Texas and one of the largest pediatric health care providers in the nation. Through our academic affiliation with UT Southwestern, one of the nation's premier academic medical centers, we are a leader in life-changing treatments, innovative technology and groundbreaking research.

## top awards and achievements



Ranked in all pediatric specialties for eight consecutive years



Four consecutive designations of ANCC Magnet recognition, the highest honor for nursing excellence



Silver Beacon Award recipient in 2024 and 2025 from the American Association of Critical-Care Nurses

## recognized as a top place to work



**GALLUP EXCEPTIONAL  
WORKPLACE AWARD**  
2025 WINNER WITH DISTINCTION

BECKER'S  
**HOSPITAL REVIEW**

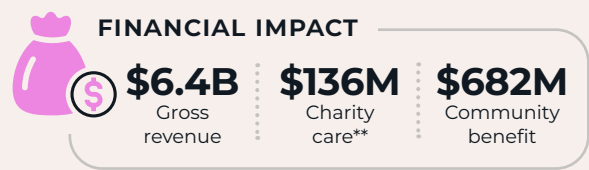
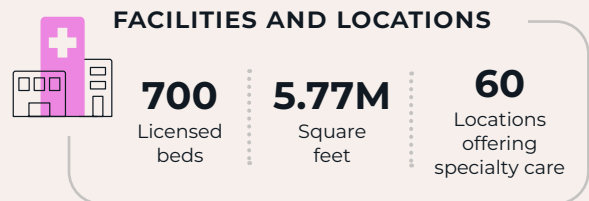
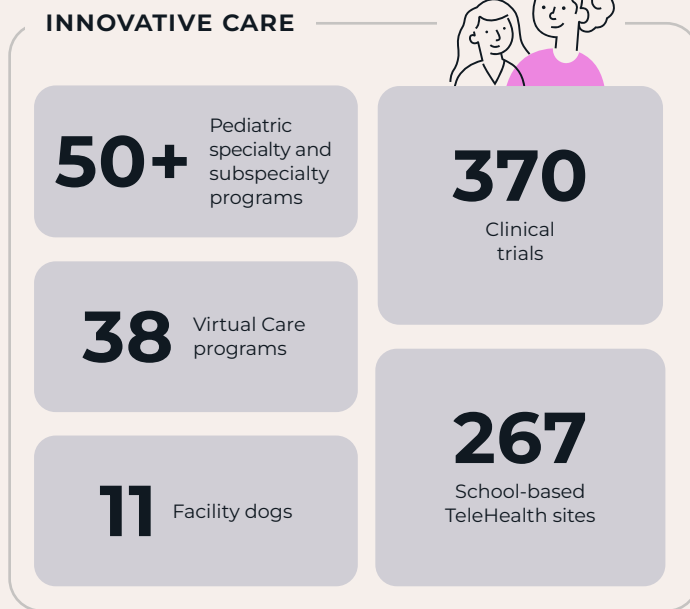
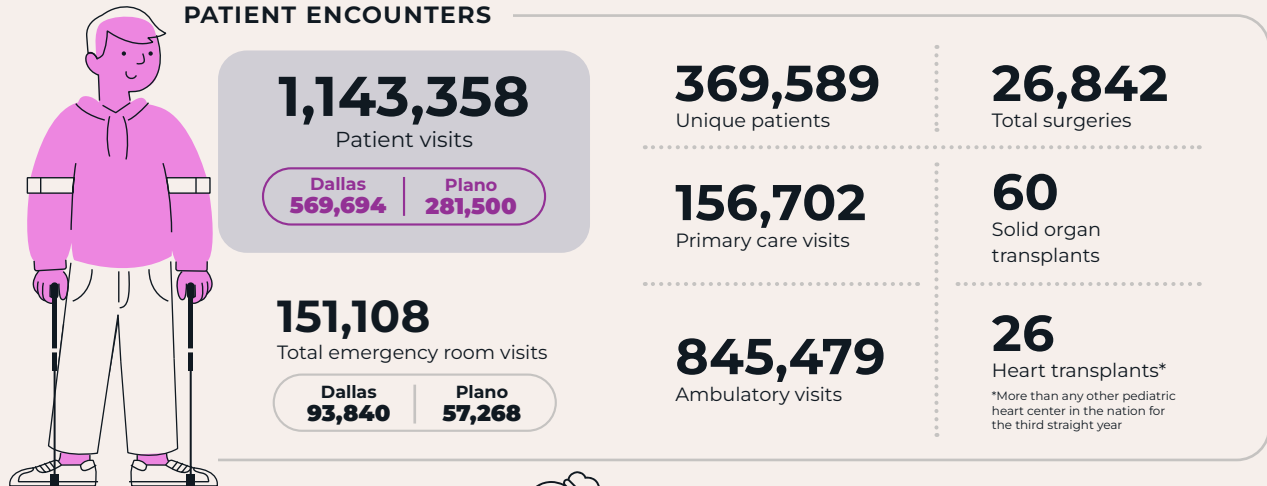
## our system: facilities and specialties

- **Children's Medical Center Dallas:** A full-service hospital with 488 licensed beds, **the only Level I pediatric trauma center in North Texas**, a Level IV neonatal intensive care unit, a pediatric intensive care unit and a specialty center with a wide array of specialty outpatient services
- **Children's Medical Center Plano:** A 212-licensed bed, full-service hospital with **48 emergency exam rooms**, a Level III trauma center, a pediatric intensive care unit and two specialty centers, including the Children's Health Andrews Institute for Orthopaedics & Sports Medicine
- **50+ specialties and subspecialties:** We are **nationally ranked in all 11 pediatric specialties** recognized by *U.S. News & World Report*, including Orthopedics, Gastroenterology and GI Surgery, Cardiology and Heart Surgery, Urology, Neurology and Neurosurgery, Diabetes and Endocrinology, Nephrology, Neonatology, Cancer, Pulmonology and Behavioral Health

## our network

- **Children's Health Primary Care:** 12 locations across North Texas providing comprehensive care – and direct access to specialty services – for children from birth through young adulthood
- **Children's Health Care Network:** A trusted, extensive community comprising more than **710 clinicians** who provide care at **186 pediatric primary care, specialty and therapeutic facilities**

## by the numbers\*



## continuing our excellence, preparing for tomorrow

In 2024, Children's Health and UT Southwestern broke ground on a new, transformative campus that will serve as a hub for innovation, academic research, training and the advancement of lifesaving technologies and will be home to Moody Children's Hospital, one of the largest pediatric hospitals in the nation.

**\$5 billion**  
campus

**4.9 million**  
square feet

**552**  
beds

**90**  
emergency exam rooms

Learn more: [childrens.com/watchusgrow](https://childrens.com/watchusgrow)

